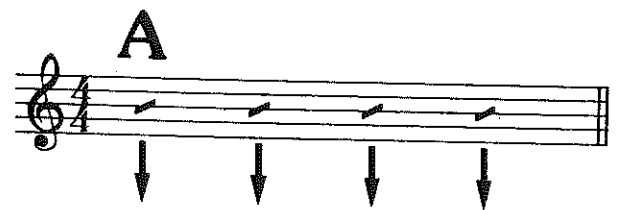
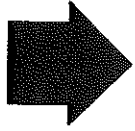
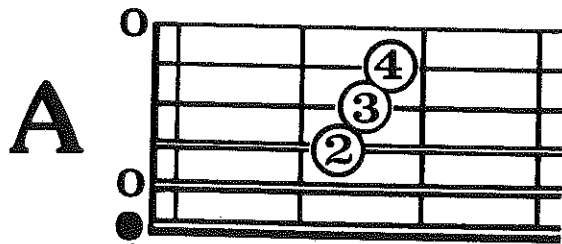
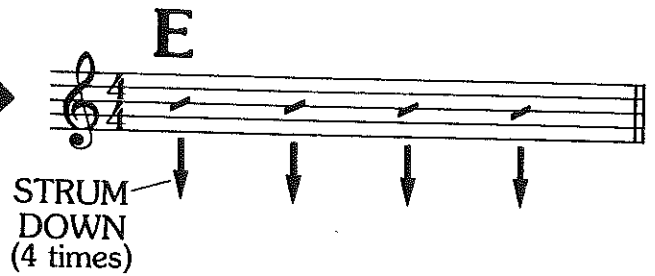
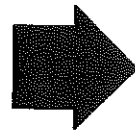
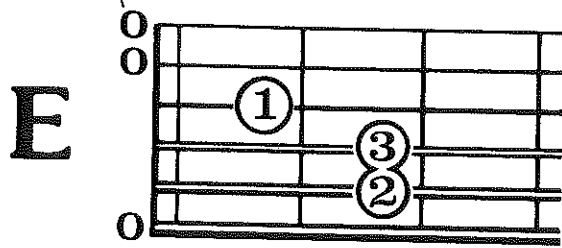


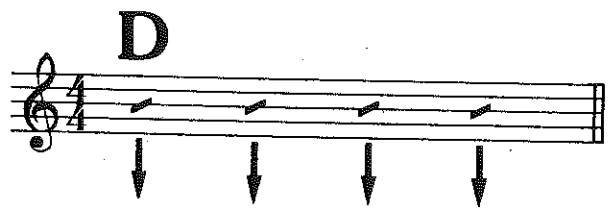
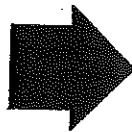
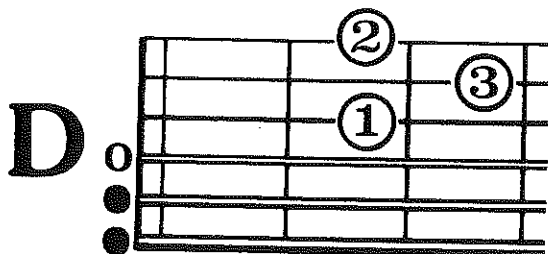
# MAJOR OPEN CHORDS

*E*, *A*, and *D* are the three most basic chords played on the guitar.  
Let's play them.

The "0" means to play the string open.  
(No left-hand finger)



The "●" means *don't* play that string.  
For the *A* chord-  
Start each strum on the 5th string.



For the *D* chord-  
Start each strum on the 4th string.

# TESTING THE CHORD

How do these chords sound? As you strum across the strings, does each note of the chord sound clean and clear?

**Test the chord** by playing each note of the chord, one at a time. Make sure that-

- you are arching your left-hand fingers.
- you are using your **fingertips**.
- you are applying enough pressure to make the string sound.
- there are no fingers overlapping, touching the wrong string.
- your fingertips are between the metal frets, not on them.
- your thumb is in position behind the neck.

## CHORD CHANGING

Once you can play the chords clearly, the next step is to change from one chord to another, as smoothly as possible.

To make chord changing easier, picture the next chord **before** you play it. Then move each finger the shortest distance needed to make the chord change. Now play through the following **chord changes**.

This **repeat sign** means to play the line twice.

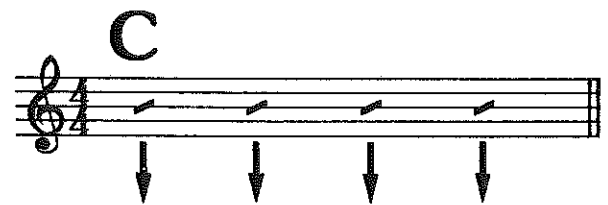
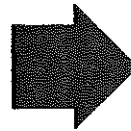
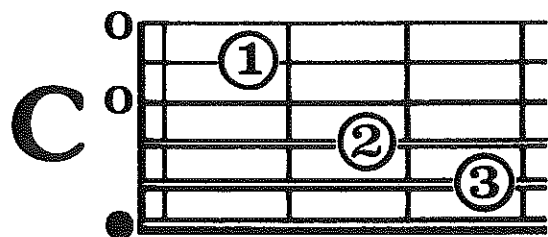
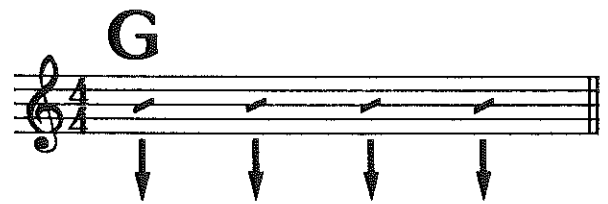
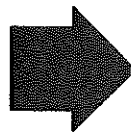
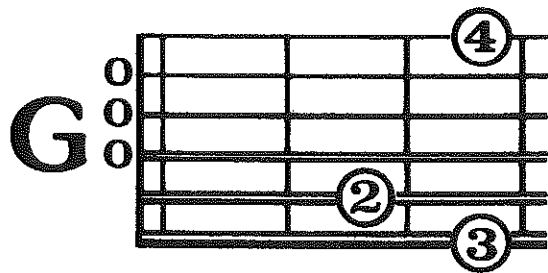
1 E CHORD CHANGE A

2 E D

3 A D

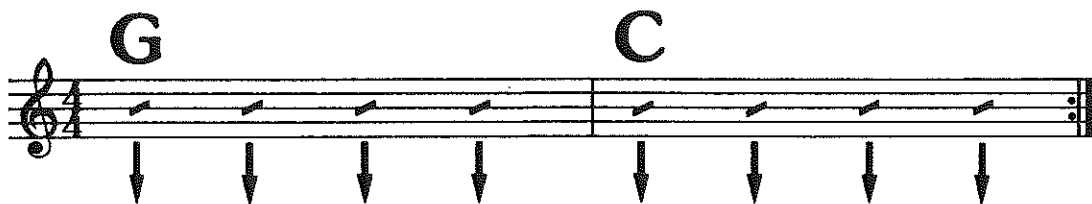
# MORE MAJOR CHORDS (G and C)

There are two more Major open chords: G and C.



For the C chord-  
Don't play the 6th string.  
Start each strum on the 5th string.

The G and C chords are usually played together like this-



# MAJOR CHORD PROGRESSIONS

E, A, D, G, and C are the five Major open chords which all other chords will be related to.

Play these chord progressions slowly and evenly, using all of the five Major chords. Be sure that you are playing the proper strings for each chord.

1

Two musical staves in 4/4 time. The first staff shows a progression from E major to A major. The E major chord is played on strings 1-4, and the A major chord is played on strings 2-5. The second staff shows a progression from E major to D major. The E major chord is played on strings 1-4, and the D major chord is played on strings 2-5. Arrows indicate the strings to be plucked for each chord.

2

Two musical staves in 4/4 time. The first staff shows a progression from A major to C major. The A major chord is played on strings 2-5, and the C major chord is played on strings 1-3. The second staff shows a progression from D major to E major. The D major chord is played on strings 2-5, and the E major chord is played on strings 1-4. Arrows indicate the strings to be plucked for each chord.

③

D G

C A

④

G E A

CHORD CHANGE

C G

⑤

C G D

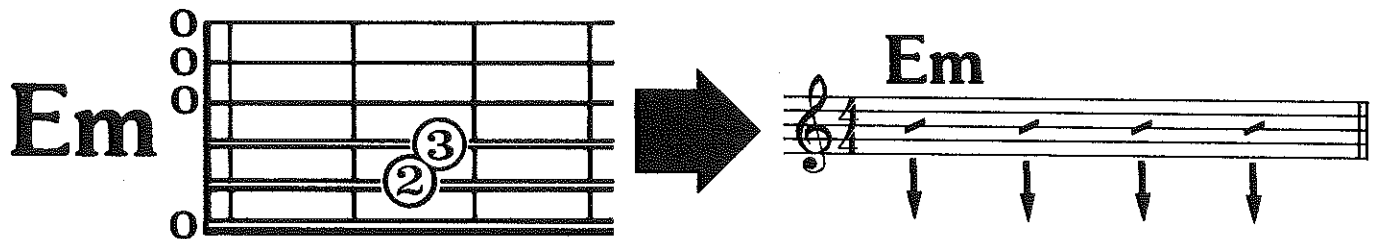
CHORD CHANGE

E G A

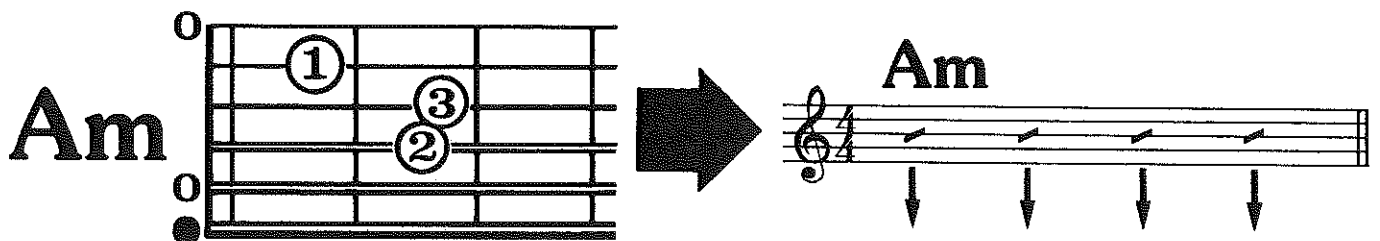
(For possible strums, turn to page 42.)

# MINOR OPEN CHORDS

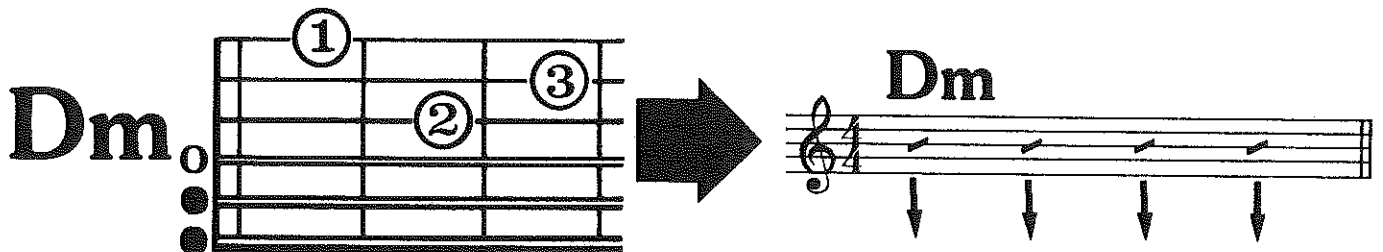
An "m" is the symbol for Minor.



For the **Am** chord-  
Don't play the 6th string.  
Start each strum on the 5th string.



For the **Dm** chord-  
Don't play the 5th and 6th string.  
Start each strum on the 4th string.

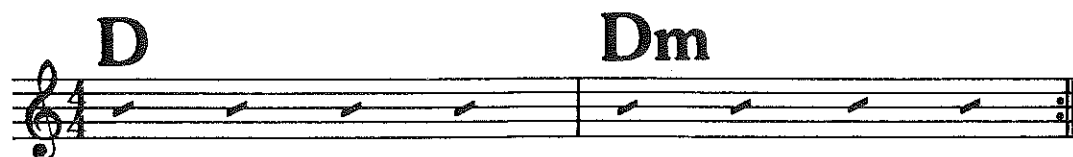
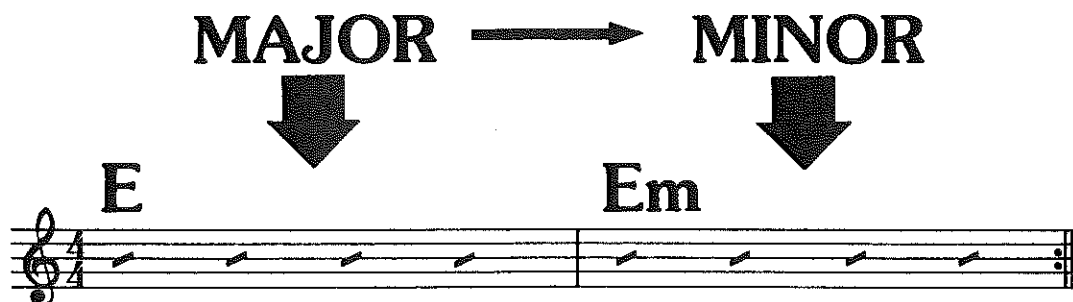


Repeat this Minor chord progression until you know the chords.



## RELATING THE MAJOR AND MINOR CHORDS

Notice that only one note has changed to form each related Minor chord.



# MAJOR AND MINOR CHORD PROGRESSIONS

Now let's put all of the Major and Minor chords together in a common chord progression.

①



②



3

Em G

Am C

4

G C D

CHORD CHANGE

Am D E

5

C Dm Em

G A D

# DOMINANT SEVENTH OPEN CHORDS

The number "7" is the symbol for the Dominant Seventh chord.

**E7**

0  
0  
①  
0  
②  
0

**E7**

Start each **A7** strum on the 5th string.

**A7**

0  
0  
③  
0  
②  
0

**A7**

Start each **D7** strum on the 4th string.

**D7**

0  
①  
③  
②  
0

**D7**



# CHORD FAMILIES

## RELATING THE MAJOR, MINOR, AND DOMINANT SEVENTH CHORDS

As we learn each new type of chord (Major, Minor, Dominant Seventh), we are building a bigger family in each key (E, A, D, etc.). Play through these progressions and you will see how similar the chords are in each chord family.

### THE "E" CHORD FAMILY



### THE "A" CHORD FAMILY

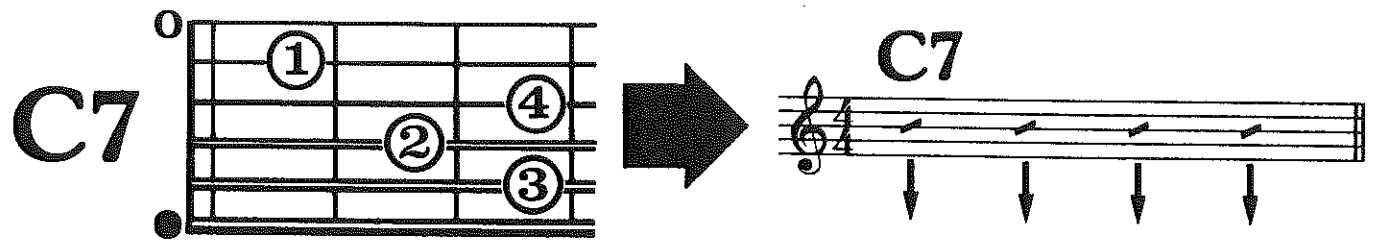
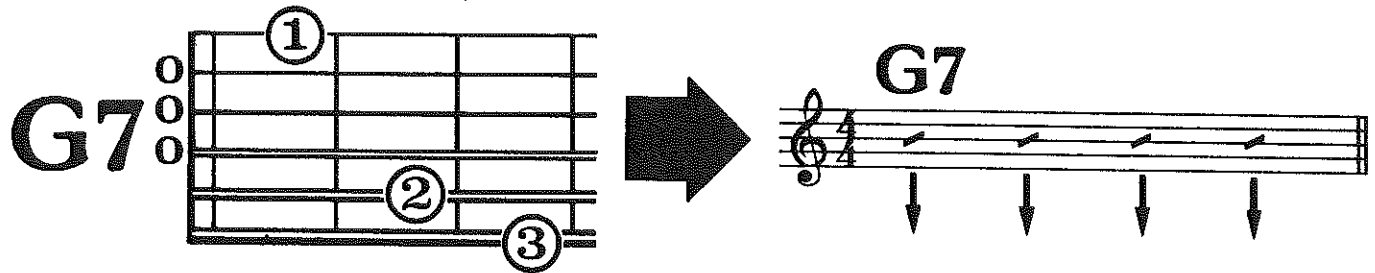


### THE "D" CHORD FAMILY



# MORE DOMINANT SEVENTH CHORDS (G7, C7, and B7)

Here are G7 and C7. They did not have Minor open chord positions.



Notice how these chords relate to their Major counterpart-

Keep the 2nd and 3rd fingers in place through both chords.



Keep the C chord fingers down and add the 4th finger to get C7.

